

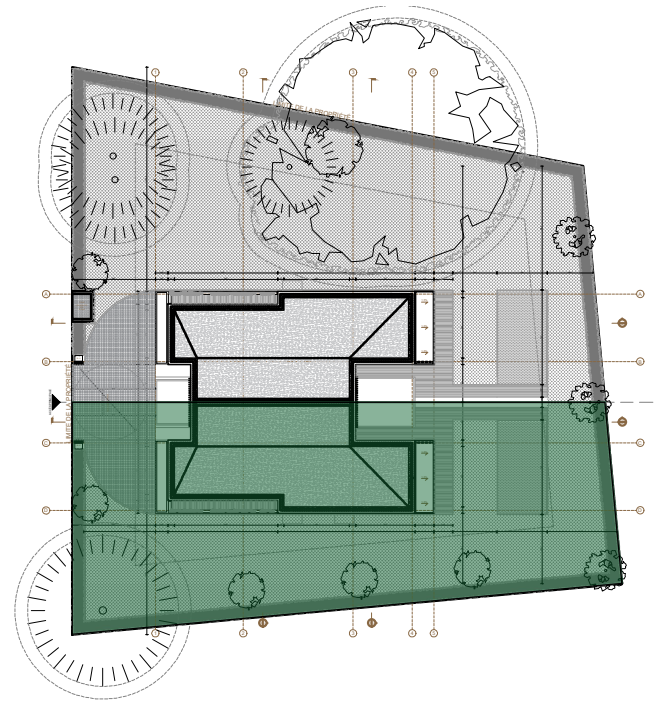
# VILLAS JUMELÉES BUCLINES 32-34

Chemin des Buclines 32, 1253 Chêne-Bougeries

## VILLA B

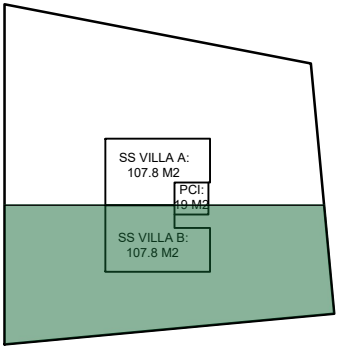
### INFORMATIONS RELATIVES AU LOT

- Surface Brute	=	224,8	m <sup>2</sup>	- Terrasse	=	37,7	m <sup>2</sup>
- Surface SS	=	107,8	m <sup>2</sup>	- Jardin	=	410	m <sup>2</sup>
- N° hors-sol	=	2		- Jardinière	=	7,5	m <sup>2</sup>
- N° sous-sol	=	1		- Piscine (option)	=	30	m <sup>2</sup>
- H sous plaf				- Terrain	=	705	m <sup>2</sup>
SS	=	2,40/70	m				
REZ	=	2,70	m				
ETAGE	=	2,70	m				
- Balcons	=	17,4	m <sup>2</sup>				

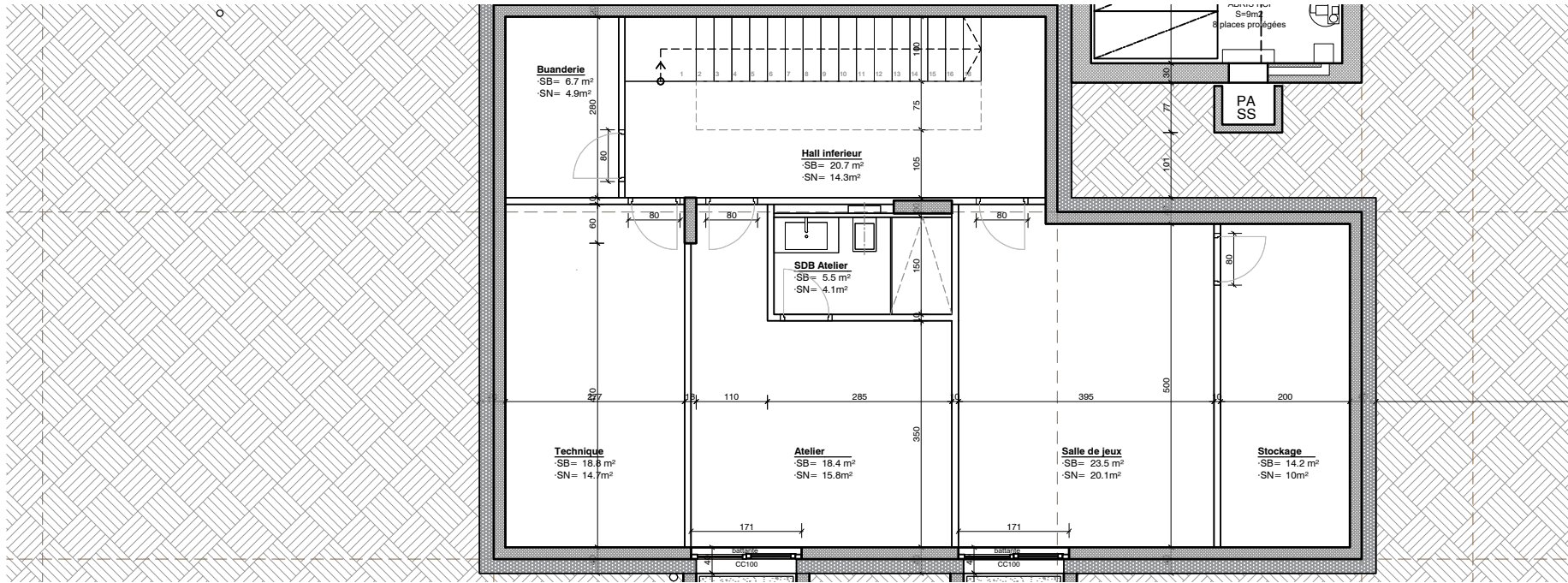


### SOUS-SOL

107,8m<sup>2</sup>

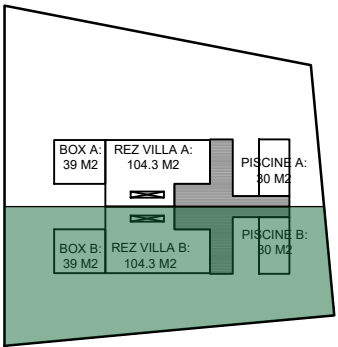


- Buanderie = 6.7 m<sup>2</sup>
- Hall inf. = 20.7 m<sup>2</sup>
- Technique = 18.8 m<sup>2</sup>
- Atelier = 18.4 m<sup>2</sup>
- SDB Atelier = 5.5 m<sup>2</sup>
- Salle jeux = 23.5 m<sup>2</sup>
- Stockage = 14.2 m<sup>2</sup>

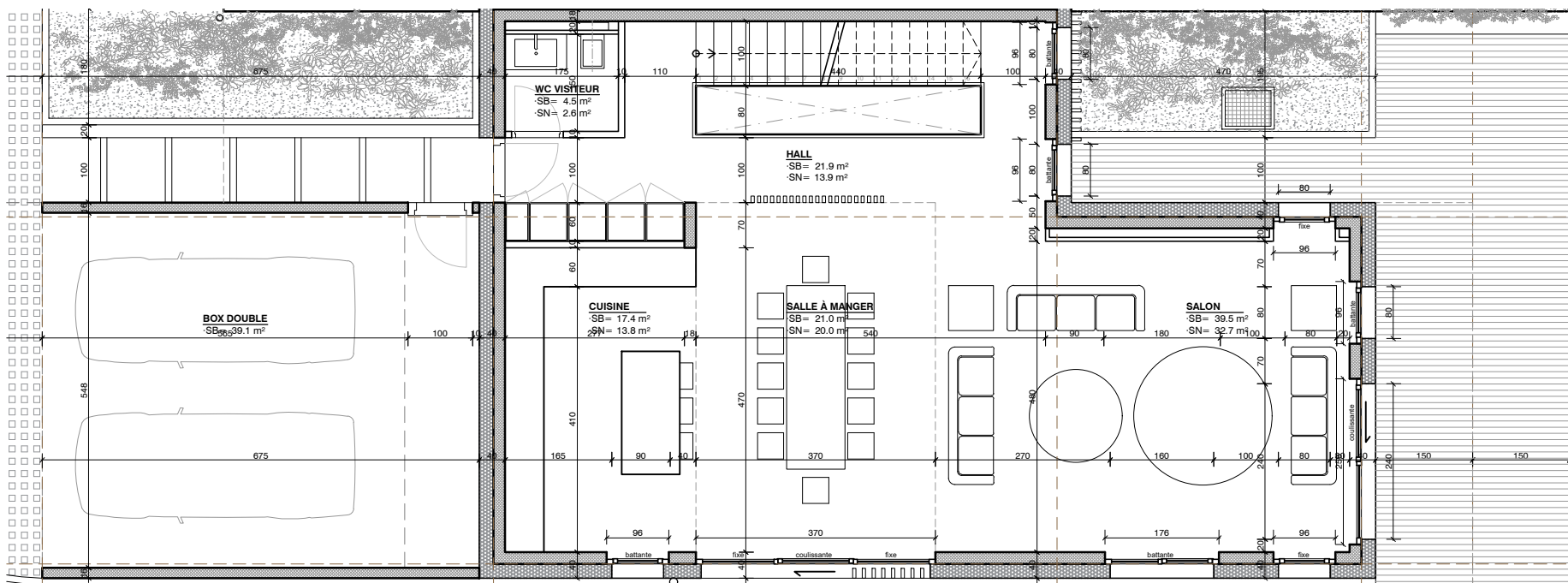


### REZ

104,3m<sup>2</sup>

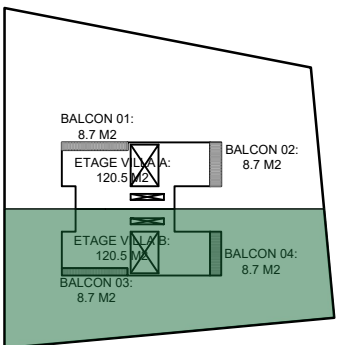


- Cuisine = 17.4 m<sup>2</sup>
- Sâm = 21 m<sup>2</sup>
- Salon = 39.5 m<sup>2</sup>
- WC visit. = 4.5 m<sup>2</sup>
- Hall = 21.9 m<sup>2</sup>

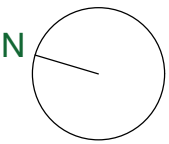
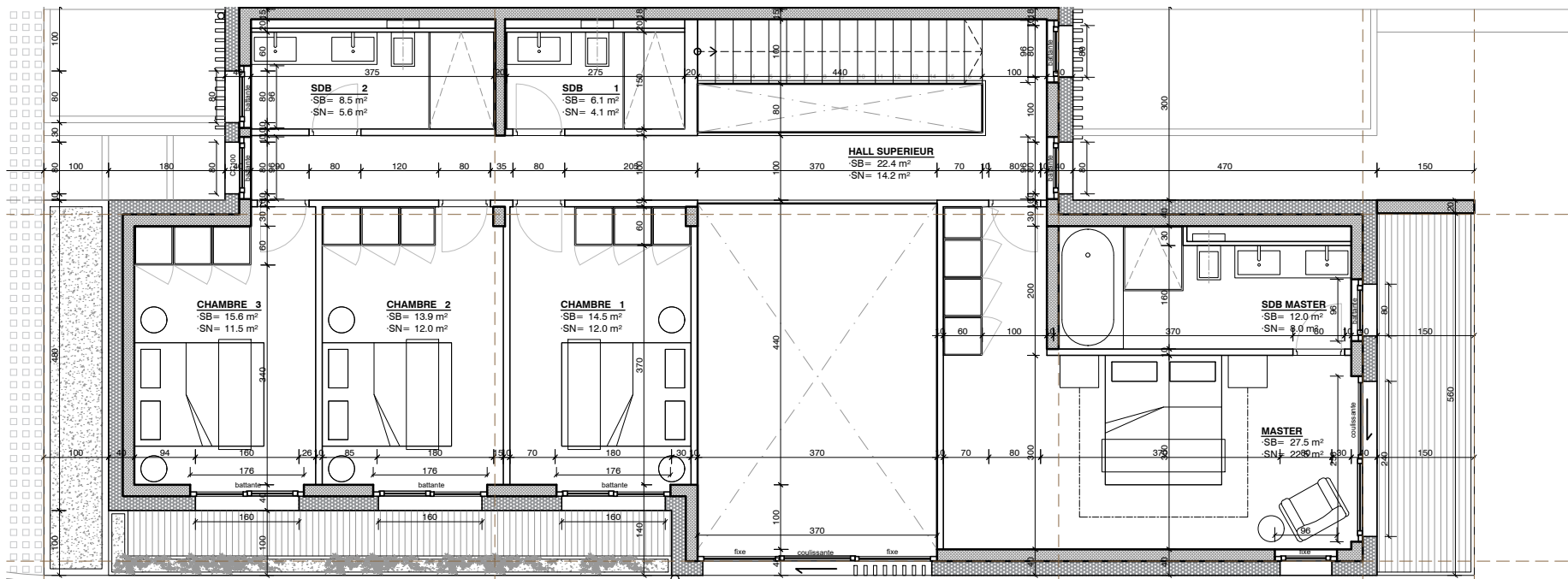


### ETAGE

120,5m<sup>2</sup>



- Chambre 3 = 15.6 m<sup>2</sup>
- Chambre 2 = 13.9 m<sup>2</sup>
- Chambre 1 = 14.5 m<sup>2</sup>
- SDB 2 = 8.5 m<sup>2</sup>
- SDB 1 = 6.1 m<sup>2</sup>
- Master = 27.5 m<sup>2</sup>
- SDB Master = 12 m<sup>2</sup>
- Hall supérieur = 22.4 m<sup>2</sup>



OBJET: Construction de deux villas jumelées.	PARCELLE: 55	DATE: 27/11/2020	<b>NEAL YMAR</b> - ARCHITECTES - RUE ROUSSEAU 5, 1201 GENÈVE +41 (0)22 301 21 21 INFO@NEALYMAR.COM WWW.NEALYMAR.CH
ADRESSE: Chemin des Buclines 32, 1253 Chêne-Bougeries	PROPRIÉTAIRES: Consortium H2BT Sarl	PLAN DE: VENTE VILLA B	
AUTORISATION			