

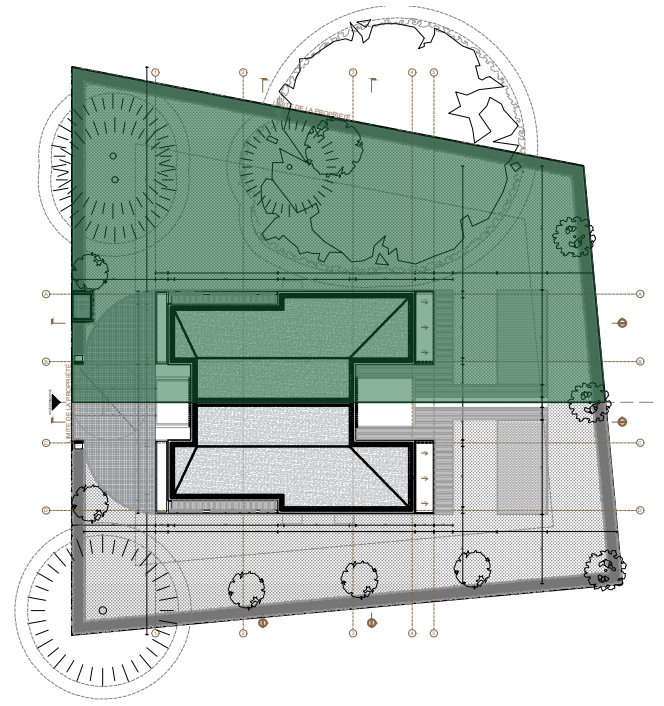
VILLAS JUMELÉES BUCLINES 32-34

Chemin des Buclines 32, 1253 Chêne-Bougeries

VILLA A

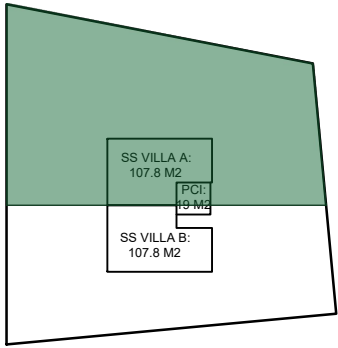
INFORMATIONS RELATIVES AU LOT

- Surface Brute	=	224,8	m ²	- Terrasse	=	37,7	m ²
- Surface SS	=	107,8	m ²	- Jardin	=	634	m ²
- N° hors-sol	=	2		- Jardinière	=	7,5	m ²
- N° sous-sol	=	1		- Piscine (option)	=	30	m ²
- H sous plaf				- Terrain	=	934	m ²
SS	=	2,40/70	m				
REZ	=	2,70	m				
ETAGE	=	2,70	m				
- Balcons	=	17,4	m ²				

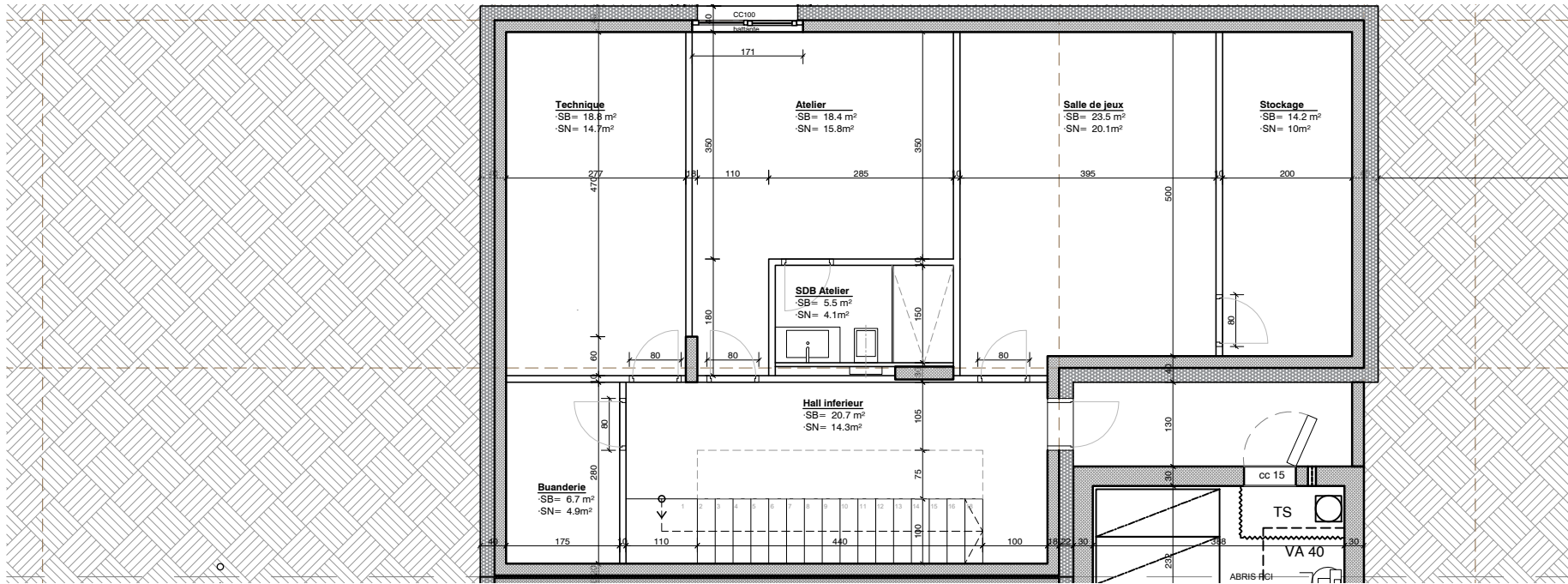


SOUS-SOL

107,8m²

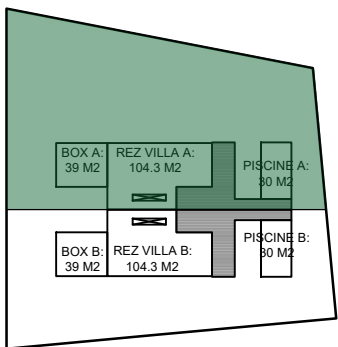


- Buanderie =6.7 m2
- Hall inf. =20.7 m2
- Technique =18.8 m2
- Atelier =18.4 m2
- SDB Atelier =5.5 m2
- Salle jeux =23.5 m2
- Stockage =14.2 m2

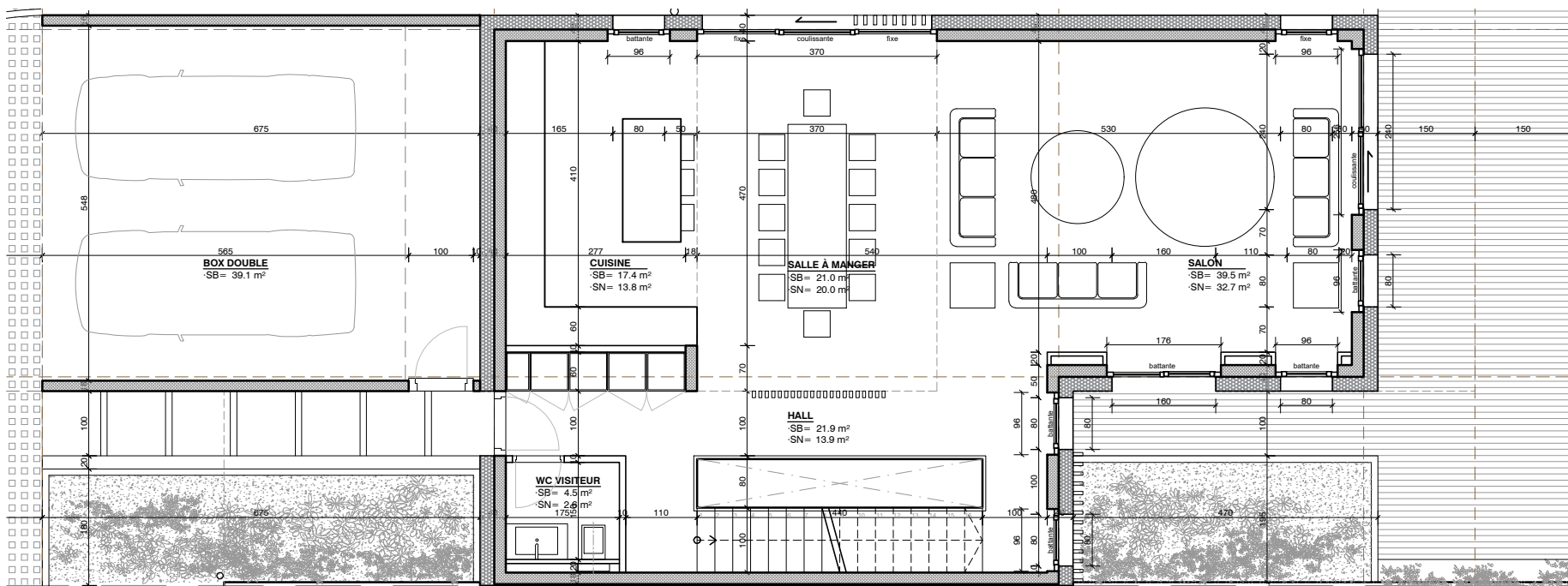


REZ

104,3m²

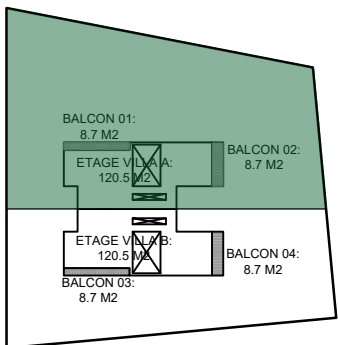


- Cuisine =17.4 m2
- Sâm =21 m2
- Salon =39.5 m2
- WC visit. =4.5 m2
- Hall =21.9 m2

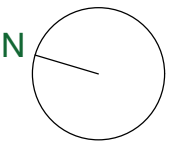
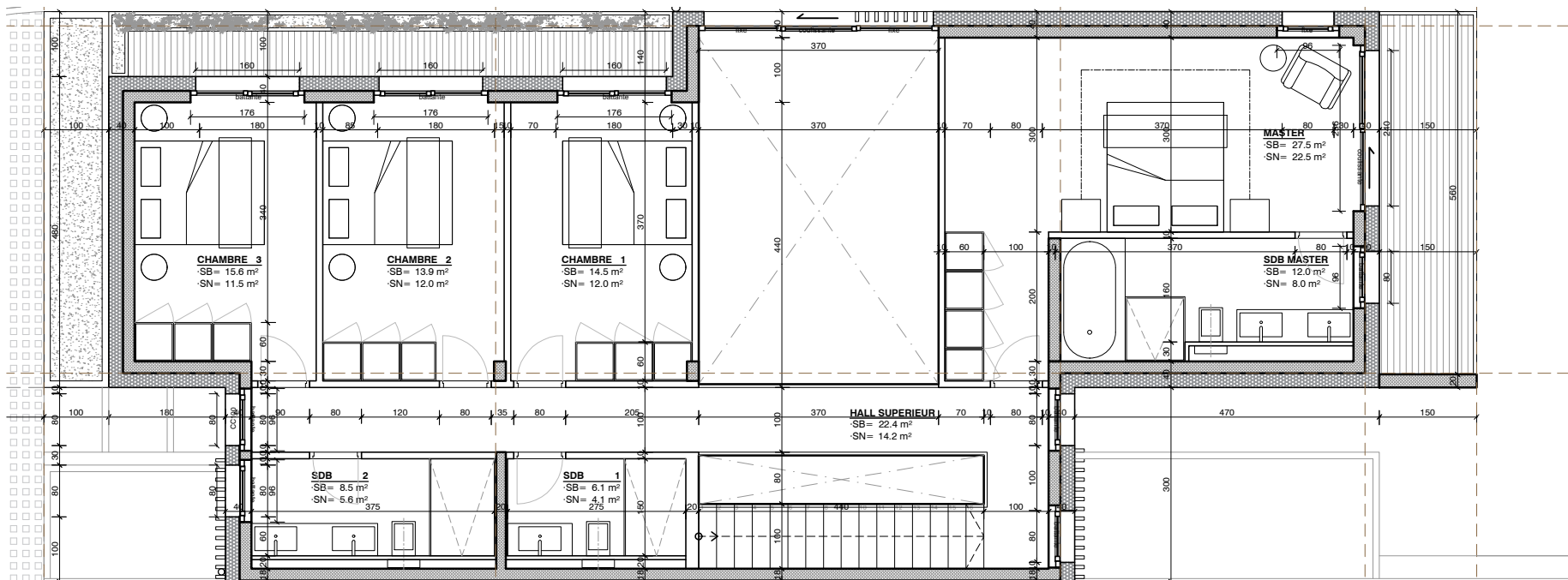


ETAGE

120,5m²



- Chambre 3 =15.6 m2
- Chambre 2 =13.9 m2
- Chambre 1 =14.5 m2
- SDB 2 =8.5 m2
- SDB 1 =6.1 m2
- Master =27.5 m2
- SDB Master =12 m2
- Hall supérieur =22.4 m2



OBJET: Construction de deux villas jumelées.
 ADRESSE: Chemin des Buclines 32, 1253 Chêne-Bougeries
 PROPRIETAIRES: Consortium H2BT Sarl
 PLAN DE: VENTE VILLA A

PARCELLE: 55
 AUTORISATION

DATE: 27/11/2020
 ECHELLE: 1/80

N.PLAN: VA

NEAL YMAR
 - ARCHITECTES -
 RUE ROUSSEAU 5, 1201 GENEVE
 +41 (0)22 301 21 21
 INFO@NEALYMAR.CH
 WWW.NEALYMAR.CH